

## MAGICART

### How to be A Global Leader in Services?

Many of us are facing after-sales trouble no matter private or governmental control company, time is invaluable and most worrying for us. Once the machine shut down, the production shut down either, and we start to lose money quickly and come to an operation crisis ..... So what we do here?

- ◆ Fast Action in Services
- ◆ Unconditional Parts Supply
- ◆ Strong Professionalism
- ◆ Spotless Satisfaction

This is how RISINGCRANE started to make business. What we do is giving the fastest services after supplying high-quality level products.

HENAN HONGSHENG CRANECO., LTD

河南鸿升起重机有限公司

Email: hi@biey.com

whatsapp ( wehat ) : +86 15250500909

Phone: +86 15250500909

https://www.biey.com

地址：中国-河南省长垣市魏庄办事处纬三路3号

## About Us

RISINGCRANE is a leading manufacturer and service provider of cranes and material handling equipment, dedicated to the R & D, design, manufacturing, installation and service of cranes and material handling technology.

RISINGCRANE owns comprehensive products, reliable quality, excellent performance, efficient service. The products are distributed in more than 30 countries and regions around the world. It is widely used in more than 20 professional fields, such as equipment manufacturing, logistics, energy, electric power, shipbuilding, metallurgy, ports, infrastructure, metal processing, hydropower stations, automobile manufacturing, and aerospace.

RISINGCRANE's main products are overhead crane, gantry crane, rubber tyred gantry crane, portal jib crane, dock arm, jib crane, electric hoist, customized crane system and lifting accessories. RISINGCRANE has saved customers huge cost in machine purchase and life cycle operating after long-term technological innovation.

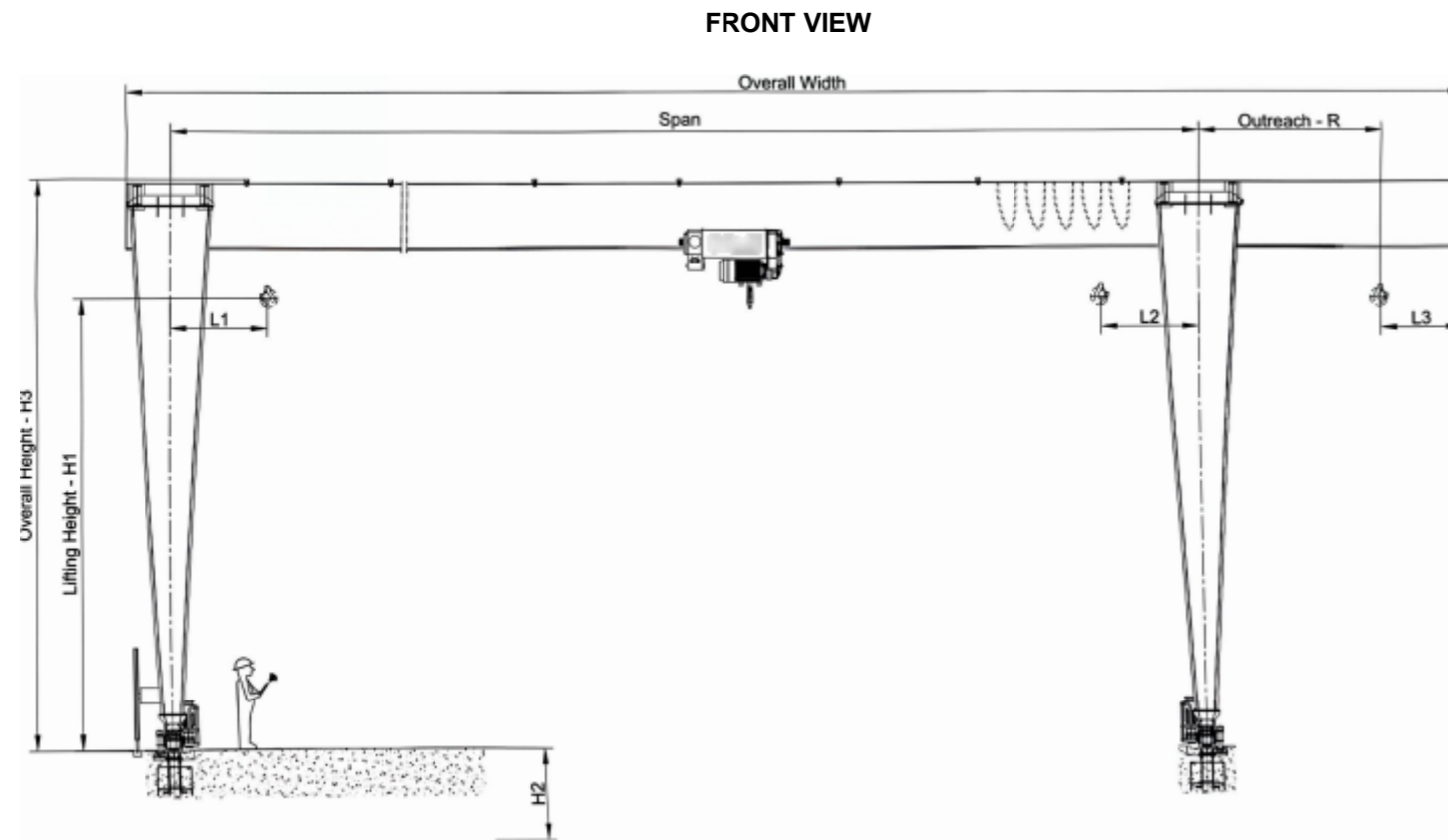
Through long-term unremitting efforts, RISINGCRANE will provide clients with the best cost-effective products to fulfill its mission: **promote client's business!**

- **Single Girder Gantry Crane (1~12.5 ton)**
- **Double Girder Gantry Crane (5~800 ton)**
- **Semi-gantry Crane (1~20 ton)**

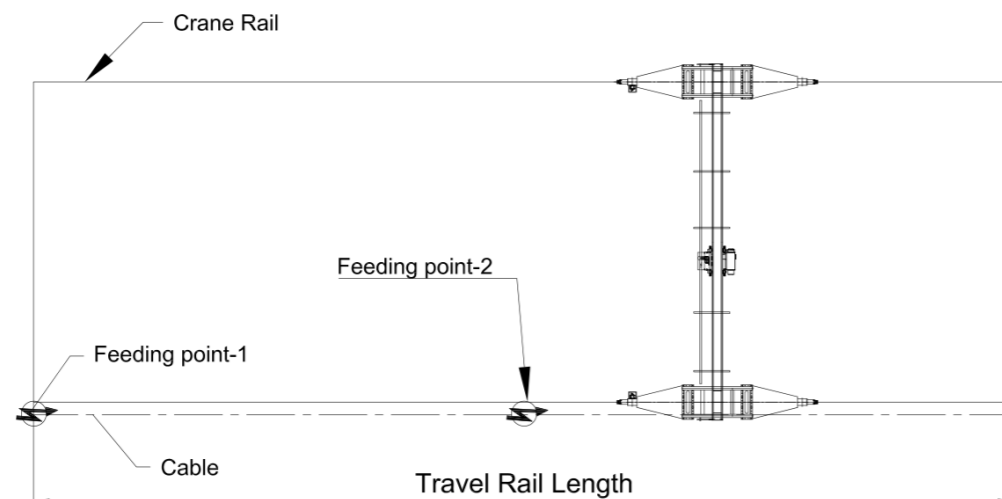


### Single Girder Gantry Crane

◆ Sketch for Info Checking



CRANE LAYOUT



**1) Necessary Info needed from client for offer**

- SWL / Load Capacity
- Span (S)
- Max. Lifting Height (H1)
- Outreach R or L
- Travel Rail Length (L)
- Quantity of crane on rail
- Power Voltage

**2) More info needed from client if available**

- Efficient working hours each day
- Material details to lift
- Outdoor or Indoor
- Pendant control or Remote control or Cabin control

### Single Girder Gantry Crane

Capacity: 1 ~12.5 t

◆ **Economic Design** : MH model  
Class : A3 / A4

◆ **European FEM Design** : CXTG model  
Class : A5



SWL / Load Capacity (ton)	Span (m)	Max Lifting height (m)	Class
1	5~28.5	3~25	A3~A5
2	5~28.5	3~25	A3~A5
3	5~28.5	3~25	A3~A5
5	5~28.5	3~25	A3~A5
8	5~28.5	3~25	A3~A5
10	5~28.5	3~25	A3~A5
12.5	5~28.5	3~25	A3~A5
Customized	Customized	Customized	N/A

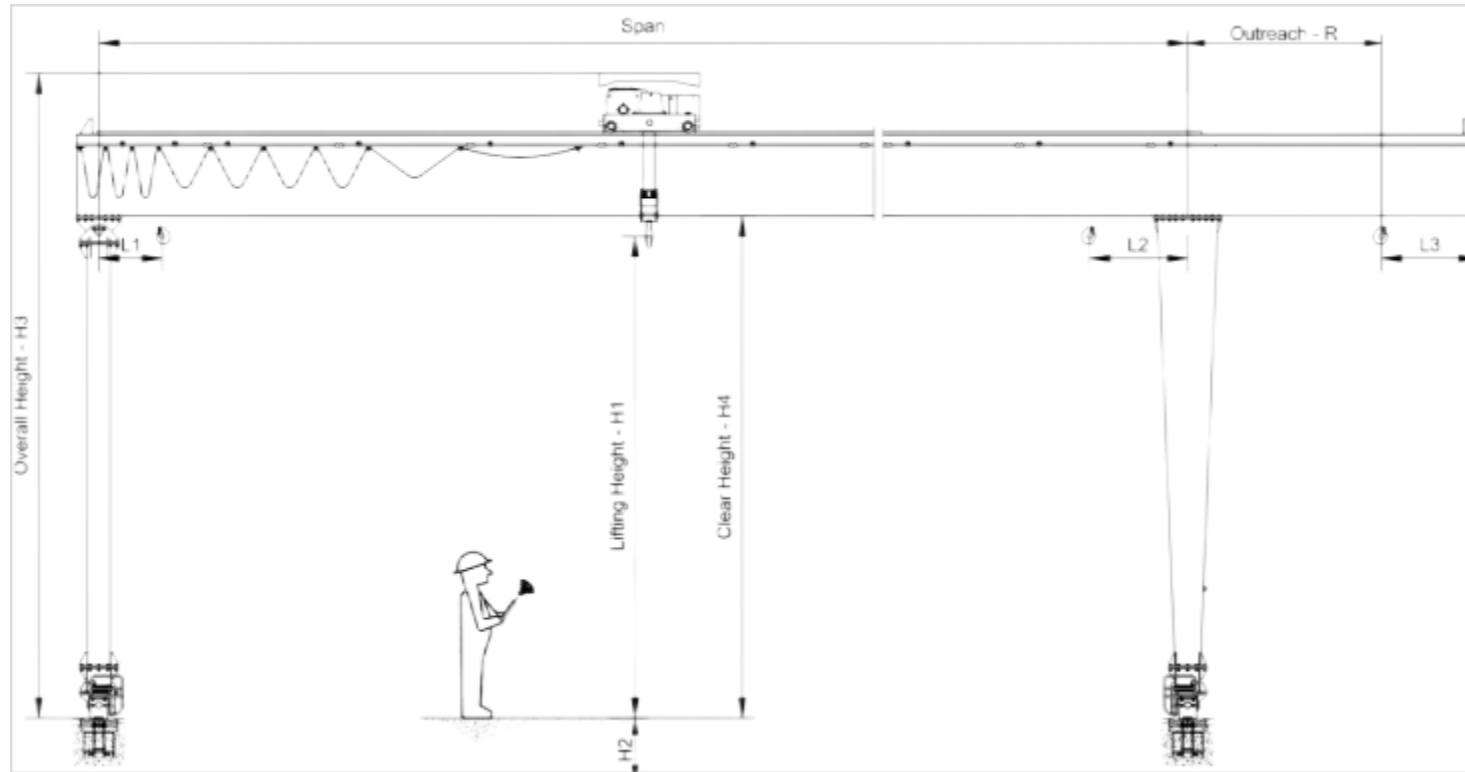
**Option :**

- Pendant or Remote or Cabin control
- Indoor or Outdoor
- Anti-explosion
- More hoist

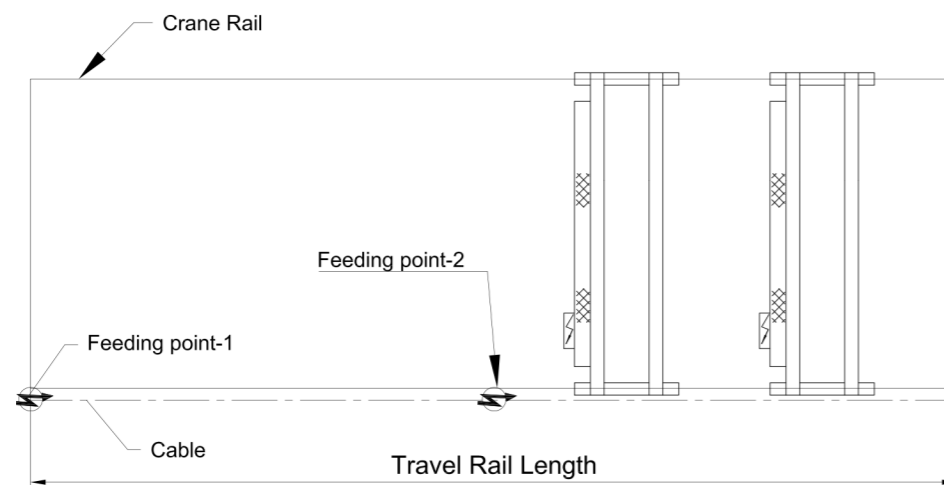
## Double Girder Gantry Crane

- ◆ Sketch for Info Checking

FRONT VIEW



CRANE LAYOUT



### 1) Necessary Info needed from client for offer

- SWL / Load Capacity
- Span (S)
- Max. Lifting Height (H1)
- Outreach R or L
- Travel Rail Length (L)
- Quantity of crane on rail
- Power Voltage

### 2) More info needed from client if available

- Efficient working hours each day
- Material details to lift
- Outdoor or Indoor
- Pendant control or Remote control or Cabin control

## Double Girder Gantry Crane

Capacity: 5~800 t



Capacity (ton)	Span (m)	Max Lifting height (m)	Class
5	5~35	3~25	A5
10	5~35	3~25	A5
15	5~35	3~25	A5, A6, A7
20	5~35	3~25	A5, A6, A7
30	5~35	6~35	A5, A6, A7
50	5~35	6~35	A5, A6, A7
80	5~35	6~35	A5, A6, A7
100	5~35	6~35	A5, A6, A7
120 ~800	5~35	6~35	A5, A6, A7
Customized	Customized	Customized	N/A

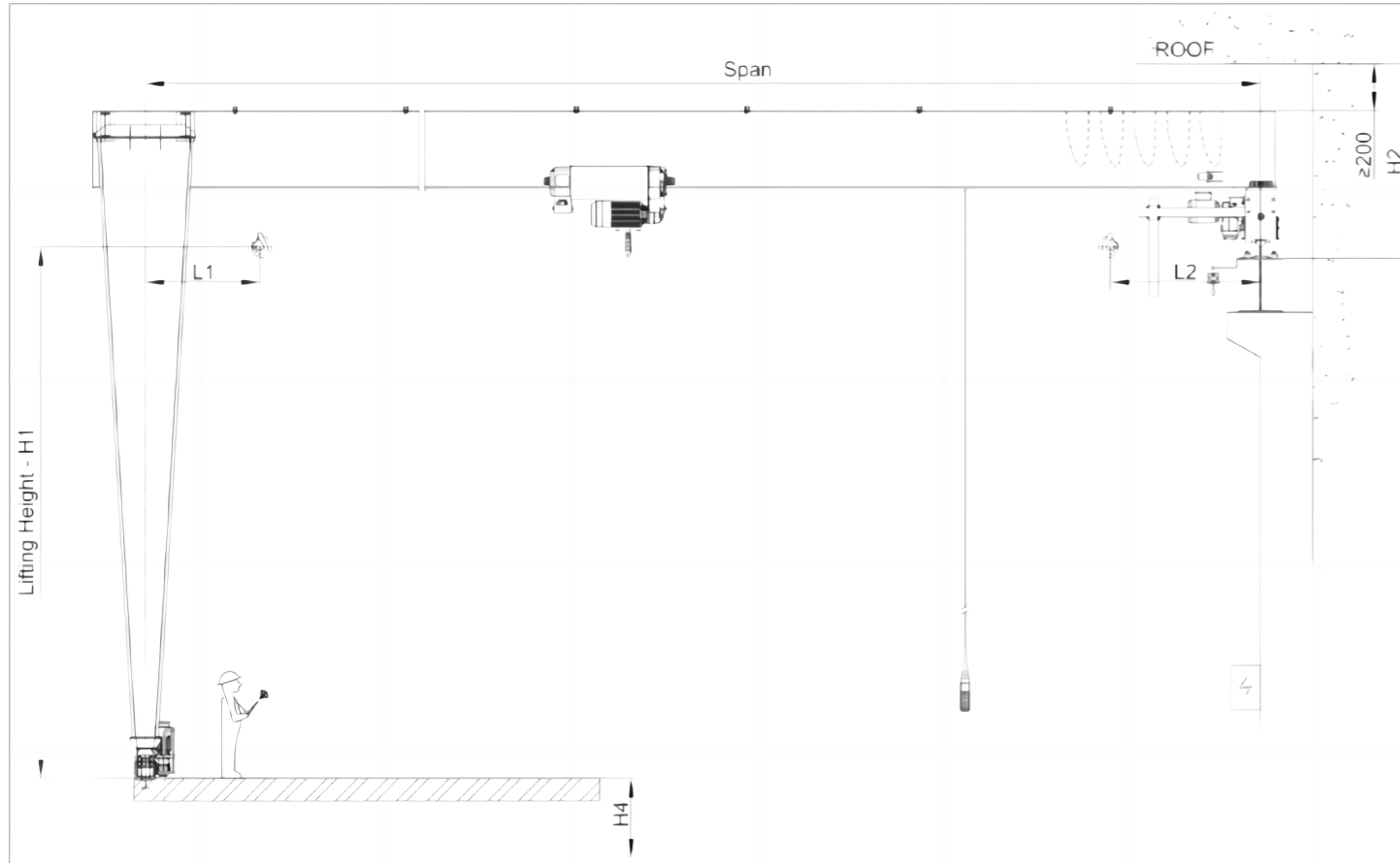
### Option :

- Remote control or Cabin
- Indoor or Outdoor
- Anti-explosion

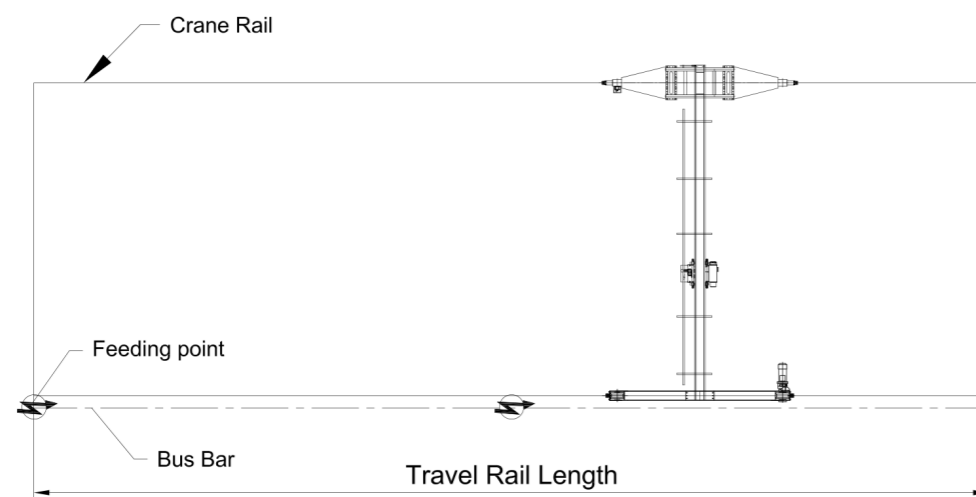
## Semi-gantry Crane

- ◆ Sketch for Info Checking

FRONT VIEW



CRANE LAYOUT



### 1) Necessary Info needed from client for offer

- SWL / Load Capacity
- Span (S)
- Max. Lifting Height (H1)
- Travel Rail Length (L)
- Quantity of crane on rail
- Power Voltage

### 2) More info needed from client if available

- Efficient working hours each day
- Material details to lift
- Outdoor or Indoor
- Pendant control or Remote control or Cabin control

## Semi-gantry Crane

Capacity: 1 ~20 t



Capacity (ton)	Span (m)	Max Lifting height (m)	Class
1	5~28.5	3~25	A3~A5
3	5~28.5	3~25	A3~A5
5	5~28.5	3~25	A3~A5
10	5~28.5	3~25	A3~A5
15	5~28.5	3~25	A3~A5
20	5~28.5	3~25	A3~A5
25 ~50	5~28.5	3~25	A3~A5
Customized	Customized	Customized	N/A

### Option :

- Pendant control or Remote control
- Indoor or Outdoor
- Anti-explosion

## Why our proposal is so attractive?

### Technology Advantages

- Advanced technology in crane structure design
- Advanced electric & hydraulic control system



### Reliable Fast Services

- Solve-trouble firstly in company rules
- Professional & fast action in solution



### Excellent Performance

- 100% performance tested in factory
- Continuous performance optimized plan



### Guaranteed Quality

- Qualified components for every part
- 2 years warranty services



## How to find out the best solution for lifting job?

Just Call +86 15250500909



hi@bi ey.com  
Tel: +86 15250500909  
HENAN HONGSHENG CRANES CO., LTD  
<https://www.bi ey.com>